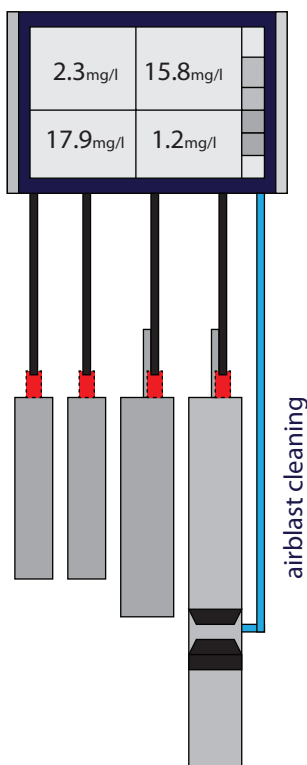


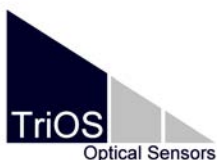
TriBox3

measurement and control system

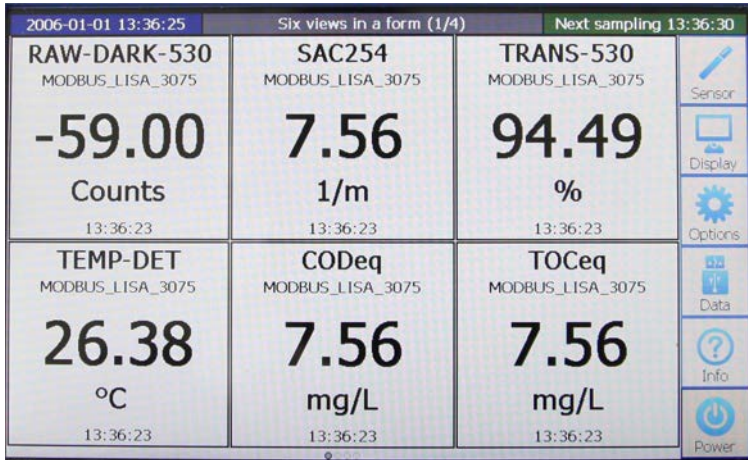
TriBox3 is a new innovative measurement and control system for all TriOS sensors. The unit offers 4 sensor channels with user selectable RS232 or RS485 function. Beside Modbus-RTC various other protocols are available. A built-in valve allows the use of airblast cleaning for the sensors. Beside this, the TriBox3 offers network TCP/IP and WLAN, USB port and 6 analog outputs (4..20mA or 0..5/10 VDC output). An integrated relay can be used to initiate alarms or control external devices. Low power consumption, a robust aluminium housing and a range of interfaces makes it suitable for all applications in environmental monitoring, drinking water, waste water treatment plants and many other areas.



2006-01-01 13:36:25		Six views in a form (1/4)		Next sampling 13:36:30	
RAW-DARK-530 MODBUS_LISA_3075	SAC254 MODBUS_LISA_3075	TRANS-530 MODBUS_LISA_3075			
-59.00 Counts	7.56 1/m	94.49 %			
13:36:23	13:36:23	13:36:23			
TEMP-DET MODBUS_LISA_3075	CODeq MODBUS_LISA_3075	TOCeQ MODBUS_LISA_3075			
26.38 °C	7.56 mg/L	7.56 mg/L			
13:36:23	13:36:23	13:36:23			



TriBox3



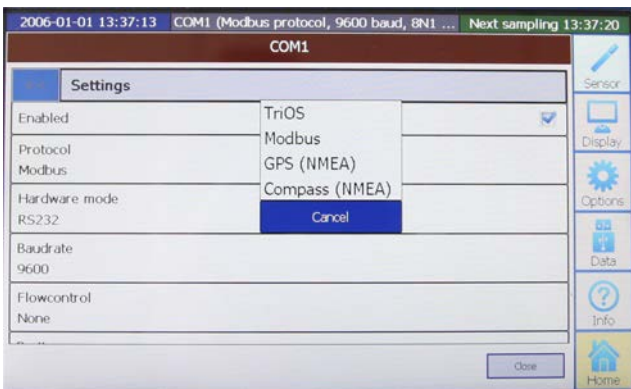
display values, time series or spectra



create as many screens as you need

Key features

Industrial PC with embedded Windows CE 7.0
graphic colour TFT screen (800x480) with touch panel
2 GB memory card
1 USB service port (data exchange, software updates)
4 serial ports (RS232/RS485) for sensors with Modbus-RTC, TriOS, etc
1 network port (RJ45)
WLAN
1 relay (user programmable functionality)
1 compressed air valve for sensor cleaning
coated aluminium case (IP65)
weight: 3.0 kg
supply voltage: 85..265 VAC and 12/24 VDC
size: 170 x 280 x 90 mm ³
temperature range: 0 - 40°C
various languages



easy selecting of port settings



sensor configuration and testing